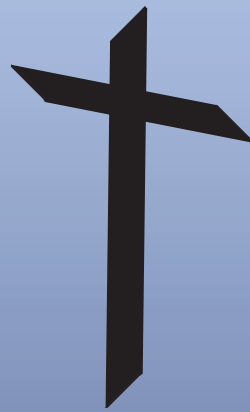


LUCAN MASS

Revised 2015



EPHREM FEELEY

LUCAN MASS

In June 1997, I was commissioned to write a mass for the *Canticle of Saint Mary*, a boys' choir based in Lucan, Co. Dublin. I envisaged a mass that would be suitable for upper voices, accessible to both children and adults, and one that could be quickly and easily learnt by the assembly.

The *Lucan Mass* was first performed by the *Canticle* in April 1998, under the directorship of Eithne Donnelly, and subsequently was used in many churches throughout Ireland and the UK. The publication of the Third Edition of the Roman Missal led to a complete re-writing of the mass: completely new Penitential Act, Gospel Acclamation and General Intercessions were written; and the Gloria, Sanctus and Memorial Acclamations were substantially overhauled. The result is a mass setting for presider, cantor, assembly, unison choir (with descant), organ, and flute. The latter may be played on any C instrument.

Other pieces that were included in the first performance were: *Come and Bless* (Entrance Hymn), *Psalm 34: I Will Bless the Name of God* (Responsorial Psalm), and *May God Bless Us* (Recessional Hymn). All are available separately from www.cherrybrookmusic.com. The communion processional *Take this Bread* is available from GIA Publications, edition G-8163.

Ephrem Feeley
April 2015

Penitential Act

Ephrem Feeley

Pleading (♩ = 76)

Presider
(or cantor):

Lord Je - sus Christ, you raise us to new life: Ky - ri - e e - lei - son.

Organ *p*

This system contains the first musical staff. The vocal line is in 3/4 time with a tempo of quarter note = 76. The organ accompaniment is in 3/4 time, starting with a piano (*p*) dynamic. The lyrics are: "Lord Je - sus Christ, you raise us to new life: Ky - ri - e e - lei - son."

Presider
(or cantor):

4 **Assembly:** Ky - ri - e e - lei - son. Lord Je - sus Christ, you for - give us of our sins:

Org. *p*

This system contains the second musical staff. It begins with a measure rest for the vocal line, then the Presider enters with the lyrics "Lord Je - sus Christ, you for - give us of our sins:". The organ accompaniment continues with a piano (*p*) dynamic. The lyrics for the Assembly are: "Ky - ri - e e - lei - son."

Descant:

8 Chri - ste e - lei - son.

Assembly: Chri - ste e - lei - son. Chri - ste e - lei - son.

Org.

This system contains the third musical staff. It begins with a measure rest for the vocal line, then the Descant enters with the lyrics "Chri - ste e - lei - son.". The organ accompaniment continues. The lyrics for the Assembly are: "Chri - ste e - lei - son. Chri - ste e - lei - son."

Gloria

Ephrem Feeley

Lilting, joyful (♩. = 66)

Flute: *f*

Organ *mf*

6 Cantor:

Glo - ry to God in the high-est, and on earth peace to peo - ple of good will.

6

Org. *mp*

10

Glo - ry to God in the high-est, and on earth peace to peo - ple of good will.

10

Org. *f*

14

mf

Assembly:

Glo-ry to God in the high-est, and on earth peace to peo-ple of good will.

Org. *mf*

18

Cantor:

Glo-ry to God in the high-est, and on earth peace to peo-ple of good will. We

Org.

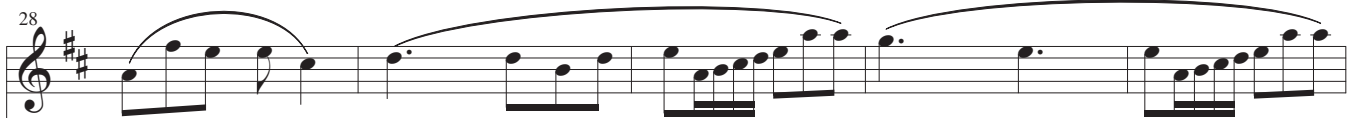
23

Choir:

praise you, we bless you, we a-dore you, we glo-ri-fy you, we give you thanks for

Org. *mp*

28



your great glo-ry, Lord God, hea-ven-ly King, O God, al-migh - ty Fa - ther.

Org.



33



mf

Assembly:



Glo - ry to God in the high-est, and on earth peace to peo - ple of good will.

Org.



mf

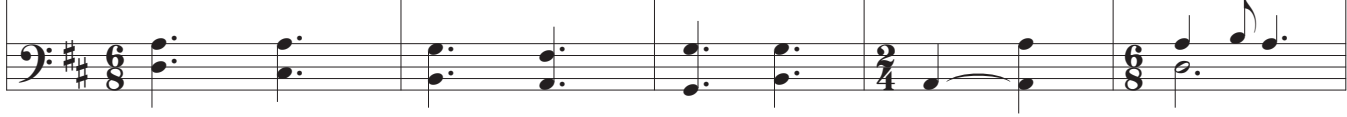


37



Glo - ry to God in the high-est, and on earth peace to peo - ple of good will.



Org.






Gospel Acclamation

Ephrem Feeley

With strength (♩. = 64)

Flute:  **REFRAIN:** 

Cantor: 
Al - le - lu - ia, Al - le - lu - ia.

Organ *f*  *mp* 

5 

5 **Descant: (last time)** 
Al - le - lu - - - - - ia.

Assembly: 
Al - le - lu - ia, Al - le - lu - ia.

Cantor: 
Al - le - lu - ia, Al - le -

5 **Org.** *mf*  *mp* 

8

Al - - - le - - - lu - - - ia.

lu - ia. Al - le - lu - ia, Al - le - lu - ia.

Org. *mf*

11

Fine

Al - - - le - - - lu - ia.

Al - le - lu - ia. Al - le - lu - - - ia.

Org. *mp* *f*

General Intercessions

Ephrem Feeley

INTERCESSION:

Cantor:

(♩ = 84)

For... Let us pray to the Lord.

Organ *p freely* *mp*

Repeat pattern until end of intercession

Detailed description: This musical score is for the Intercession section. It features a Cantor part and an Organ part. The Cantor part is written in a single treble clef staff with a key signature of two sharps (F# and C#) and a 4/4 time signature. The tempo is marked as quarter note = 84. The lyrics are "For... Let us pray to the Lord." The Organ part is written in grand staff notation (treble and bass clefs). It begins with a dynamic marking of *p* (piano) and the instruction "freely". The first four measures of the organ part are bracketed together with the instruction "Repeat pattern until end of intercession". The organ part then continues with a dynamic marking of *mp* (mezzo-piano) for the final two measures.

RESPONSE:

Descant:

4

Lo - ving, ten - der God: Lord, hear our prayer.

Detailed description: This is the Descant part of the Response. It is written in a single treble clef staff with a key signature of two sharps and a 4/4 time signature. The lyrics are "Lo - ving, ten - der God: Lord, hear our prayer." The piece begins with a 4-measure rest.

Assembly:

4

Lo - ving God, ten - der God: Lord, — hear our prayer.

Detailed description: This is the Assembly part of the Response. It is written in a single treble clef staff with a key signature of two sharps and a 4/4 time signature. The lyrics are "Lo - ving God, ten - der God: Lord, — hear our prayer." The piece begins with a 4-measure rest.

Org.

mf

Detailed description: This is the Organ part of the Response. It is written in grand staff notation (treble and bass clefs) with a key signature of two sharps and a 4/4 time signature. The piece begins with a 4-measure rest and a dynamic marking of *mf* (mezzo-forte).

Sanctus

Ephrem Feeley

Strongly (♩ = 110)

Assembly:

Ho - ly, ho - ly, ho - ly Lord God of Hosts.

Organ *mf*

7 Hea - ven and earth and full of your glo - ry. Ho - san - na in the high - est. Ho -

7 Flute:

Org.

11 san - na, ho - san - na, ho - san - na in the high - est.

11 Org. *f*

Memorial Acclamation B

Ephrem Feeley

With confidence (♩ = 110)

Flute

President: Assembly:

The my-ste-ry of faith: When we eat this bread and drink this cup, we pro-

Organ

Fl.

5

5

Descant:

claim your death, O Lord, un - til you come a - gain.

claim your death, O Lord, un - til you come a - gain.

Org.

Memorial Acclamation C

Ephrem Feeley

With confidence (♩ = 110)

Flute

President: Assembly:

The my-ste-ry of faith: Save us, Sa-viour of the world, ___ for by your

Organ

Detailed description: This system contains the first four measures of the piece. It features three staves: Flute (top), Organ (middle, grand staff), and vocal parts (bottom). The vocal parts are divided into 'President' and 'Assembly'. The music is in a key with one flat (B-flat) and a 3/4 time signature. The tempo is marked 'With confidence' with a quarter note equal to 110 beats per minute. The Flute part has a long melodic line with a slur over measures 2-4. The Organ part provides harmonic support with chords and moving lines in both hands. The vocal parts enter in measure 2 with the lyrics 'The my-ste-ry of faith: Save us, Sa-viour of the world, ___ for by your'.

Fl.

Descant:

cross and re - sur - rec - tion you have set us free.

cross and re - sur - rec - tion you ___ have ___ set us free.

Org.

Detailed description: This system contains measures 5-8. It features four staves: Flute (top), two vocal parts (middle), and Organ (bottom, grand staff). The vocal parts are labeled 'Descant:'. The lyrics are 'cross and re - sur - rec - tion you have set us free.' The Flute part continues with a melodic line. The Organ part provides accompaniment. The system ends with a double bar line.

Doxology and Great Amen

Ephrem Feeley

Presider:

Through him, and with him, and in him, O God, almighty Father,

Organ *mp colla voce*

This system contains the first four measures of the piece. The Presider's part is written in a single treble clef staff with a key signature of one flat (B-flat) and a common time signature. The lyrics are: "Through him, and with him, and in him, O God, almighty Father,". The Organ part consists of three staves (treble, bass, and a grand staff) with a dynamic marking of *mp colla voce*.

Flute:

in the unity of the Ho-ly Spi-rit, all glory and honour is yours, for- ev - er and ev - er!

Org. *faster*

This system contains the next four measures. The Flute part begins in the fourth measure with a melodic line. The lyrics are: "in the unity of the Ho-ly Spi-rit, all glory and honour is yours, for- ev - er and ev - er!". The Organ part continues with a dynamic marking of *faster*.

Tempo giusto (♩ = 110)

7

7

Descant:

A - - - men, A - - - men!

Cantor /
Choir:

A - men, A - men, A - men, A - men!

Org. *mf*

11

11

A - men, A - - men, A - - - - men!

Assembly:

A - men, A - men, A - men, A - men!

Org. *f* *rit.* *ff*

Agnus Dei

Ephrem Feeley

Tranquil (♩. = 50)

Flute

Cantor:
Lamb of God, you take a-way the sins, the sins of the

Organ *p*

6

Fl.

Cantor:
world: Lamb of God, you

Assembly:
Have mer-cy on us, have mer-cy on us, have mer - cy on us.

Org.